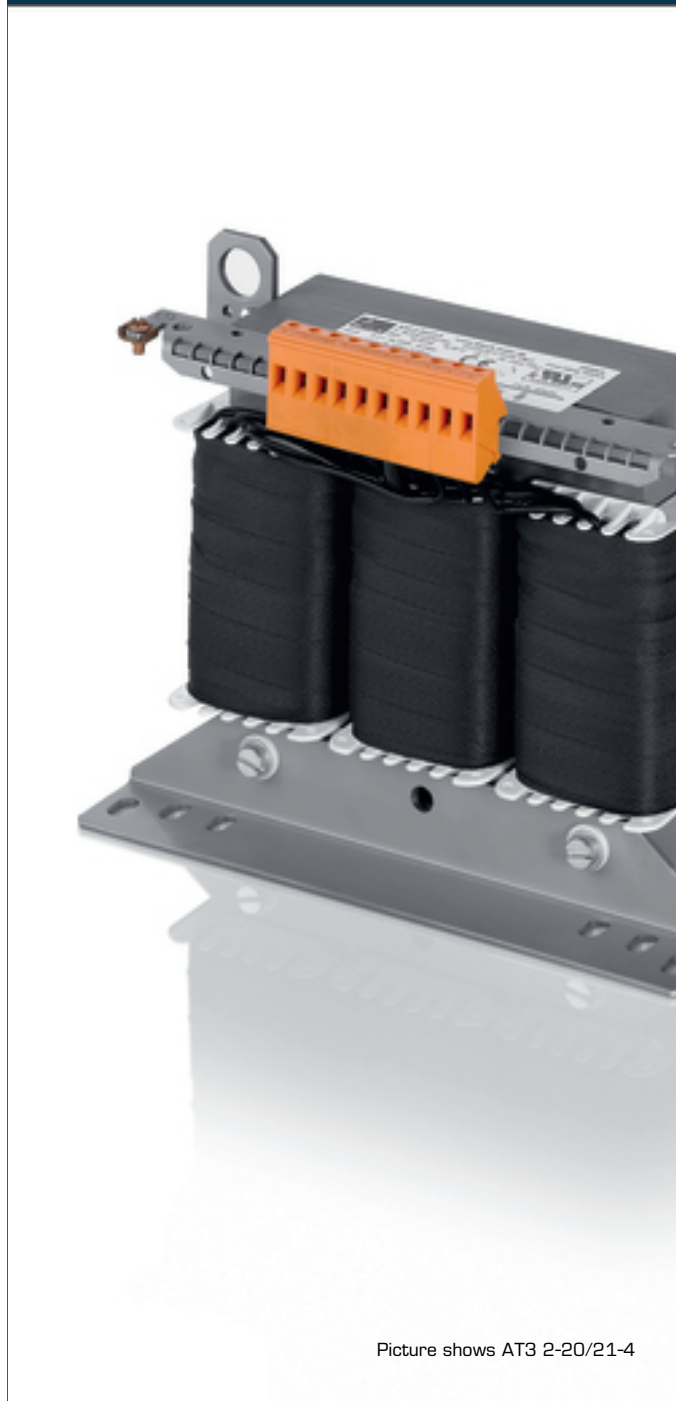


# Autotransformer

## AT3 160-20/21-4



Picture shows AT3 2-20/21-4

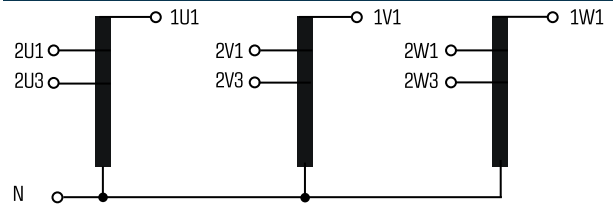
## Advantages

- Low weight and small size (compared to isolating transformers)
- Very high efficiency
- Patented assembly technology to lower heat losses
- Very good corrosion protection and low noise thanks to vacuum impregnation
- Fixed, contact protected screw connection terminals complying with UVV BGV A3
- Multifunctional fixing rails with 12 oval slots
- Enlarged fixing rail for easy installation from above
- Integrated crane eyes

## Applications

Autotransformer for adjustment of the voltage on the input and output sides with no requirement for electrical isolation.

## Sample application



## Standards

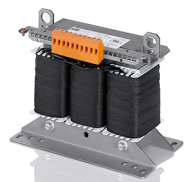


Autotransformer  
to: VDE 0570 Teil 2-13, DIN EN 61558-2-13, EN 61558-2-13,  
IEC 61558-2-13, UL 5085-1/-2, CSA 22.2 No.66

## Approvals



UL 5085-1/-2, CSA 22.2 No.66



# Autotransformer AT3 160-20/21-4

Type		AT3 160-20/21-4
Electrical data	Input	
	Rated input voltage	3 x 200/208 Vac
	Rated frequency	50 - 60 Hz
	Output	
	Rated output voltage	3 x 400 Vac
	Rated Power	160.000 VA
	Vector group	YNΔ0
	Efficiency	98.0 %
	Approvals	
	Approvals	cURus
	Environment	
	Ambient temperature max.	40 °C
	Safety and protection	
	Type	Open type
	Insulation class	F
	Protection index	IP 00
Safety class (prepared)	I	
Short circuit strength	non-short-circuit proof	
Test voltage	4000 Vac, 50 Hz	
Order numbers		
Recommended enclosure	BGE-095	
<b>Order Number</b>	<b>AT3 160-20/21-4</b>	

Type		AT3 160-20/21-4
Terminal and mounting	Fixing method	Fixing rail
	Fixing screws	M12
Terminals		Screw-type terminals
Measures and weights		
Core type		3 UI 300/150
Weight		380.0 kg

